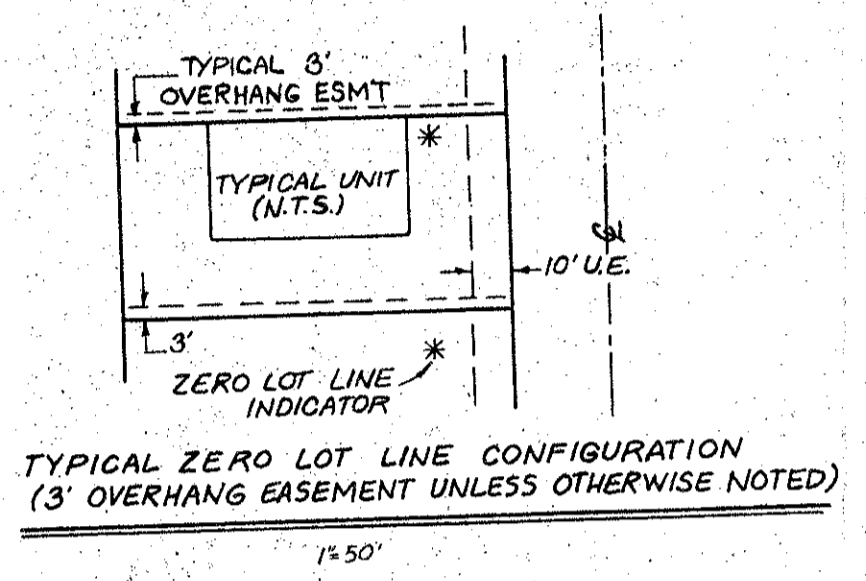
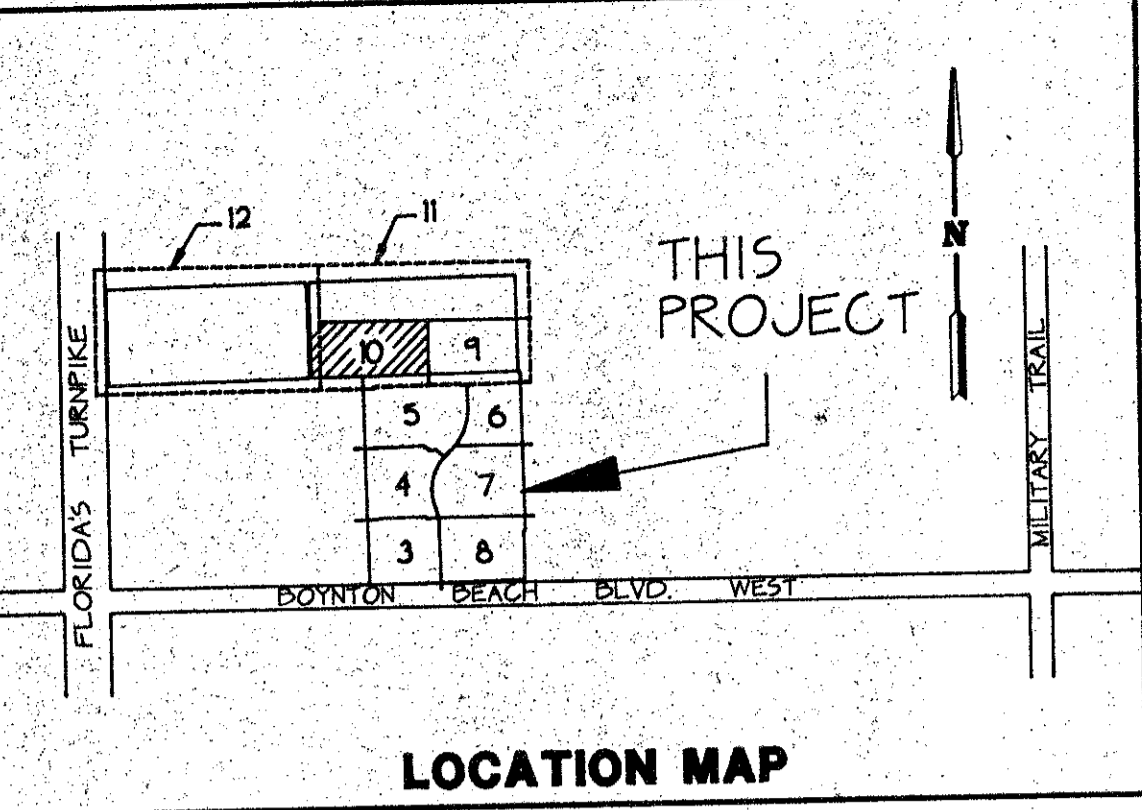


# PALM ISLES, A P.U.D.

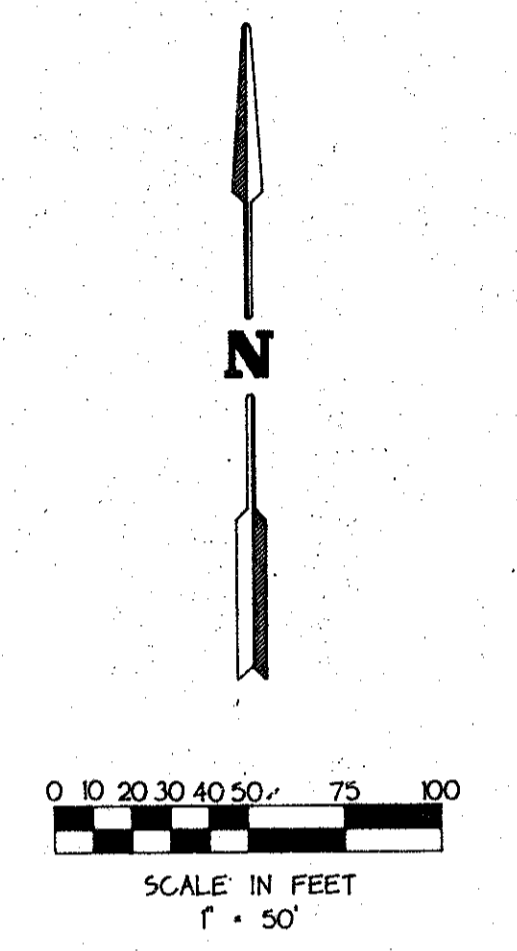
A REPLAT OF A PORTION OF BLOCK 49 OF PALM BEACH FARMS COMPANY PLAT NO. 3  
AS RECORDED IN PLAT BOOK 2, PAGES 45 THROUGH 54 INCLUSIVE OF THE PUBLIC RECORDS OF PALM BEACH COUNTY, FLORIDA  
IN SECTION 21, TOWNSHIP 45 SOUTH, RANGE 42 EAST, PALM BEACH COUNTY, FLORIDA

THIS INSTRUMENT PREPARED BY JAMES E. PARK, P.L.S.  
WILLIAMS, HATFIELD & STONER, INC. - ENGINEERS PLANNERS SURVEYORS  
1325 SOUTH CONGRESS AVENUE, SUITE 118, BOYNTON BEACH, FLORIDA 33426

SHEET 10 OF 12



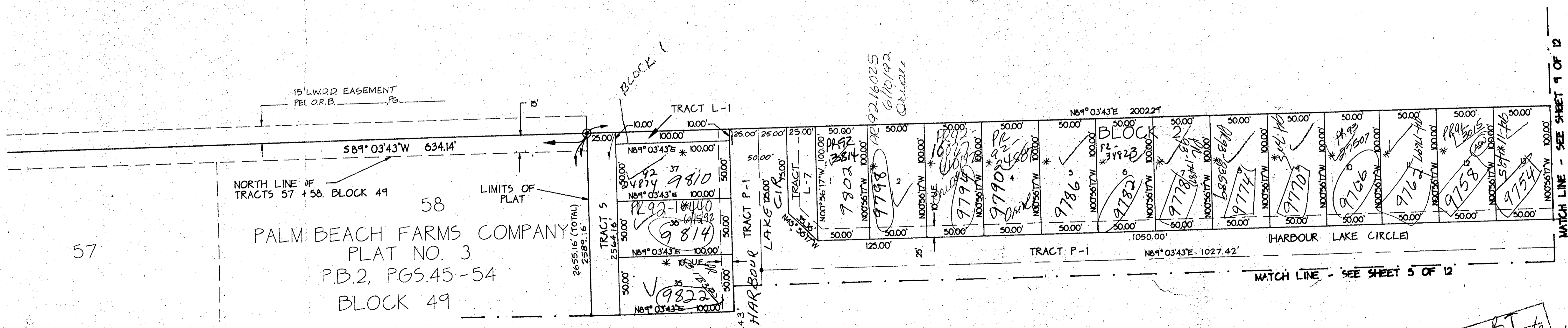
TRACT T  
(TO BE REPLATTED PRIOR TO DEVELOPMENT)  
SEE SHEETS 11 + 12 OF 12



NOTE: SHEETS 3 THROUGH 10, AT 1" = 50'  
SHEETS 11 AND 12 AT 1" = 100'

TAZ 443

DIVISION 4 PALM ISLES  
 BLOCK 67 PAGE 125  
 PLANNING ZONE B  
 QUAD 350  
 SE 87-92  
 SUB NAME SAUWAC  
 ZIP CODE 33427  
 RECORDED MAP # 185A  
 RECORD # 16  
 2588 1.6



ADD. BY  
 CHECKED BY  
 BT  
 wh

DUPLICATE